

Metallized Polypropylene Film Capacitor(Axial Lead) Snubber/Switching Application

SFV

订购基本规格

EXPLANATION OF ARTICLE CODE

S F V -	1 0 5	K	3 A	A	4 6	L	L
①	②	③	④	⑤	⑥	⑦	⑧

① Capacitor Type

TYPE	SFV
CODE	SFV-

② Rated Capacitance (EIA Code)

The rated Capacitance value of the product is indicated with three digits. The first two digits indicate the two most significant digits of the capacitance value, and the third digit gives the number of following zeroes. This gives the capacitance value expressed in picofarads.

Examples:

105	=	1,000,000pF	=	1,000nF	=	1uF
106	=	10,000,000pF	=	10,000nF	=	10uF

③ Capacitance Tolerance

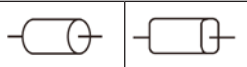

TOLERANCE	±5%	±10%	±20%
CODE	J	K	M

④ Rated Voltage

Code for DC Voltage: (expressed in one digit & one letter code)

VOLTAGE	630V	700V	800V	850V	900V	1000V	1100V	1200V	1250V	1500V	1600V	1800V	2000V	2500V	3000V
CODE	2J	2S	SK	ST	SU	3A	3L	3M	3B	3N	3C	3Q	3D	3E	3F

⑤ Lead Configuration

CODE	A	
LEAD TYPE		

⑥ Length

Unit: mm

Lead Pitch	29.0	34.0	46.0	55.0	59.0
CODE	29	34	46	55	59

⑦ Lead Forming Pitch

Lead Pitch	N/A
CODE	L

⑧ Lead Length

Lead Pitch	N/A
CODE	L

Metallized Polypropylene Film Capacitor(Axial Lead) Snubber/Switching Application

SFV

High voltage and current adsorption capacitor consists of wound metallized polypropylene film and aluminum film in series winding, outer wrapt by polyester film tape and end sealed by epoxy resin. They are suitable for snubber, industrial and motor speed controls, SMPS, and medium-high pulse applications



■ APPLICATIONS

Energy Conversion.

Power Semiconductor Circuits.

IGBT Modules Protection.

■ FEATURES

High peak & RMS current capability

Low loss polypropylene dielectric

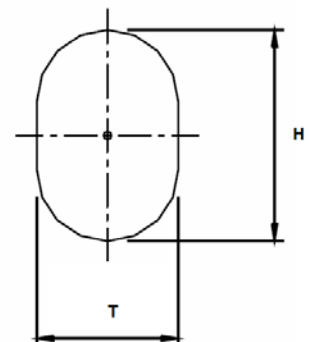
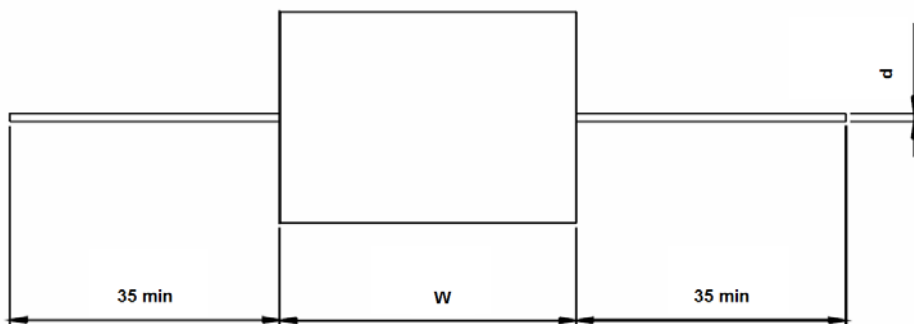
Self healing

Flame resistance case and resin

Multiple Lead Styles

■ SPECIFICATIONS

Operating Temperature:	-40°C - +85°C
Capacitance range:	0.015μF - 1.5μF
Capacitance Tolerance:	±5%(J), ±10%(K) at 1KHz
Rated Voltage:	850VDC - 3000VDC
Dissipation Factor:	<0.05% at 1 kHz, 25 °c
Dielectric Withstand:	1.6 x rated voltage for 10 seconds (terminal to terminal)
Insulation Resistance:	30,000 MΩ min. after 1 minutes of electrification @ 500 Vdc & 25 °C
Life Expectancy:	100,000 hours at Ur and 70 °C
Self Inductance:	≤1nH/mm of body length and lead wire length.
Lead Terminations:	Tinned copper leads (RoHS compliant)



Metallized Polypropylene Film Capacitor(Axial Lead) Snubber/Switching Application

SFV

■ DIMENSIONS / 产品尺寸

SIZE		850 V D C						
R.V. CAP(μF)	W (mm)	H (mm)	T (mm)	d (mm)	dv/dt (v/us)	I peak (A)	I _{rms} @100KHz +25°C (A)	ESR @100KHz +25°C mΩ
0.15	34.0	16.0	10.0	1.0	800	120	7.4	6.0
0.22	34.0	18.0	12.0	1.0	800	176	8.0	6.0
0.33	34.0	20.0	14.0	1.0	800	264	9.4	5.0
0.47	34.0	27.0	17.0	1.0	800	376	11.7	5.0
0.68	46.0	27.0	19.0	1.2	500	340	14.4	4.0
1.0	46.0	33.0	22.0	1.2	500	500	13.8	3.0
1.2	54.0	28.0	18.0	1.2	400	480	16.7	3.0
1.5	54.0	36.0	22.0	1.2	400	600	20.3	2.0

■ DIMENSIONS / 产品尺寸

SIZE		1000 V D C						
R.V. CAP(μF)	W (mm)	H (mm)	T (mm)	d (mm)	dv/dt (v/us)	I peak (A)	I _{rms} @100KHz +25°C (A)	ESR @100KHz +25°C mΩ
0.22	34.0	18.0	12.0	1.0	800	176	8.0	6.0
0.33	34.0	20.0	14.0	1.0	800	264	9.1	5.0
0.47	34.0	27.0	17.0	1.0	800	376	11.7	5.0
0.68	46.0	27.0	19.0	1.2	500	340	14.4	4.0
1.0	46.0	33.0	22.0	1.2	500	500	13.8	3.0
1.2	54.0	28.0	18.0	1.2	400	480	16.7	3.0
1.2	54.0	36.0	22.0	1.2	400	600	20.3	2.0

■ DIMENSIONS / 产品尺寸

SIZE		1200 V D C						
R.V. CAP(μF)	W (mm)	H (mm)	T (mm)	d (mm)	dv/dt (v/us)	I peak (A)	I _{rms} @100KHz +25°C (A)	ESR @100KHz +25°C mΩ
0.15	34.0	16.0	9.5	1.0	1000	150	9.0	6.0
0.22	34.0	19.0	12.5	1.0	1000	220	10.2	6.0
0.33	46.0	20.5	13.5	1.0	800	264	10.8	6.0
0.47	46.0	25.5	19.5	1.2	800	376	11.7	5.0
0.68	46.0	29.0	20.5	1.2	800	544	13.6	5.0
1.6	54.0	36.0	26.0	1.2	500	500	13.8	3.0
1.2	54.0	32.0	22.0	1.2	700	840	16.8	3.0

■ DIMENSIONS / 产品尺寸

SIZE		1600 V D C						
R.V. CAP(μF)	W (mm)	H (mm)	T (mm)	d (mm)	dv/dt (v/us)	I peak (A)	I _{rms} @100KHz +25°C (A)	ESR @100KHz +25°C mΩ
0.1	34.0	19.0	13.0	1.0	1100	110	9.0	7.0
0.15	34.0	21.0	16.0	1.0	1100	165	10.0	7.0
0.22	34.0	25.0	18.0	1.2	1100	242	12.0	7.0
0.33	46.0	26.0	17.0	1.2	900	297	12.0	6.0
0.47	46.0	28.5	21.5	1.2	900	423	13.8	6.0
0.68	46.0	34.0	23.5	1.2	900	612	14.5	6.0

Metallized Polypropylene Film Capacitor(Axial Lead) Snubber/Switching Application

SFV

■ DIMENSIONS / 产品尺寸 :

SIZE		2000 V D C					
R.V. CAP(μF)	OD (mm)	L (mm)	d (mm)	dv/dt (v/us)	I peak (A)	Irms @100KHz +25°C (A)	ESR @100KHz +25°C mΩ
0.01	12.0	23.0	0.8	1700	17	3.0	42.0
0.015	15.0	23.0	0.8	1700	25.5	4.0	40.3
0.022	15.0	23.0	0.8	1700	37.4	6.0	36.5
0.033	17.0	35.0	0.8	1700	56.1	7.0	24.2
0.047	17.0	35.0	0.8	1700	79.9	8.0	15.3
0.068	17.0	35.0	1.0	1700	115.6	9.0	14.2
0.1	19.0	42.0	1.0	1000	100	9.0	8.6
0.15	19.0	42.0	1.0	1000	150	10.0	7.2
0.22	25.0	55.0	1.0	900	198	11.0	6.5
0.33	30.0	55.0	1.2	900	297	11.0	4.6

■ DIMENSIONS / 产品尺寸 :

SIZE		2500 V D C					
R.V. CAP(μF)	OD (mm)	L (mm)	d (mm)	dv/dt (v/us)	I peak (A)	Irms @100KHz +25°C (A)	ESR @100KHz +25°C mΩ
0.033	17.0	35.0	0.8	1500	49.5	4.0	20.0
0.047	17.0	35.0	0.8	1500	70.5	6.0	13.0
0.068	17.0	35.0	1.0	1500	102	8.2	11.0
0.1	19.0	42.0	1.0	1200	120	8.2	8.9
0.15	19.0	42.0	1.0	1200	180	8.2	7.7
0.22	19.0	55.0	1.2	1000	220	9.1	6.9
0.33	25.0	55.0	1.2	1000	330	10.8	5.8
0.47	25.0	55.0	1.2	1000	470	12.0	4.2

■ DIMENSIONS / 产品尺寸 :

SIZE		3000 V D C					
R.V. CAP(μF)	OD (mm)	L (mm)	d (mm)	dv/dt (v/us)	I peak (A)	Irms @100KHz +25°C (A)	ESR @100KHz +25°C mΩ
0.01	12.0	23.0	0.8	2800	28	2.0	62.0
0.015	12.0	23.0	0.8	2800	42	3.0	41.0
0.022	15.0	23.0	0.8	2800	61.6	4.0	28.0
0.033	17.0	35.0	1.0	1500	49.5	5.0	19.8
0.047	19.0	55.0	1.0	1000	47	6.5	18.0
0.068	19.0	55.0	1.0	1000	68	8.0	12.5
0.1	19.0	55.0	1.2	1000	100	8.0	8.9
0.15	19.0	55.0	1.2	1000	150	11.0	6.7
0.22	25.0	55.0	1.2	1000	220	12.0	4.8
0.33	30.0	55.0	1.2	1000	330	12.0	4.2